



PORTS AND YACHTING DIRECTORATE

Transport Malta

LOCAL NOTICE TO MARINERS NO 28 of 2012

Our Ref: TM/PYD/111/92

17 May 2012

Malta Transport Centre
Marsa, MRS 1917
Malta

Tel: (356) 2122 2203
Fax: (356) 2125 0365
Email: info.tm@transport.gov.mt

www.transport.gov.mt

Blue Lagoon, Comino: Swimmers' Zone

The Ports and Yachting Directorate, Transport Malta notifies all bathers, mariners and owners of sea craft that the following arrangements will be made for Blue Lagoon in the channel between Comino and Cominotto for the period between 15 May 2012 and 15 October 2012.

1) Swimmers' Zone

No boats, seacraft or objects which may endanger the safety of bathers shall be used within a swimmers' zone. The swimmers' zone which is being reserved exclusively for bathers and is delineated by the following coordinates:-

POSITIONS	LATITUDE (N)	LONGITUDE (E)
1A	36° 00'.893	14° 19'.281
1B	36° 00'.898	14° 19'.289
1C	36° 00'.825	14° 19'.351
1D	36° 00'.846	14° 19'.440
1E	36° 00'.854	14° 19'.448
1F	36° 00'.751	14° 19'.471
1G	36° 00'.740	14° 19'.390

2) Anchoring area for pleasure craft

The boundary of the anchoring area for pleasure craft is delineated by the following coordinates:-

Points	Latitude (N)	Longitude (E)	
1	36° 00'.842	14° 19'.409	(Buoy)
2	36° 00'.829	14° 19'.352	
3	36° 00'.952	14° 19'.249	
4	36° 00'.987	14° 19'.311	(Buoy)
5	36° 00'.919	14° 19'.356	(Buoy)

3) Mooring areas for Commercial vessels

2 mooring areas are being assigned for Commercial vessels. The boundaries of these mooring areas are delineated by the following coordinates:-



Transport Malta

6	36° 00'.966	14° 19'.329	(Buoy)
7	36° 01'.024	14° 19'.372	(Shore)
8	36° 00'.974	14° 19'.426	(Shore)
9	36° 00'.933	14° 19'.374	
10	36° 00'.908	14° 19'.388	
11	36° 00'.941	14° 19'.433	
12	06° 00'.920	14° 19'.458	
13	36° 00'.866	14° 19'.439	
14	36° 00'.859	14° 19'.421	(Buoy)

4) Fairway

A Fairway has been established as indicated in the chart. Special marker buoys fixed with a light flashing every 5 seconds will be placed in positions **1, 4, 5, 6, 14**. The Fairway is to be used solely for navigation and should otherwise be kept clear.

Anchoring and Mooring is only permitted in the indicated area. A minimum safety clearing distance of 5 metres from the swimmers' zone is to be maintained.

Wire ropes supported by floats will delineate the swimmers' zone and may be placed two weeks before or after the stipulated date (1 May 2012). No craft will be authorised to unload/load passengers from the Cominotto side of Blue Lagoon.

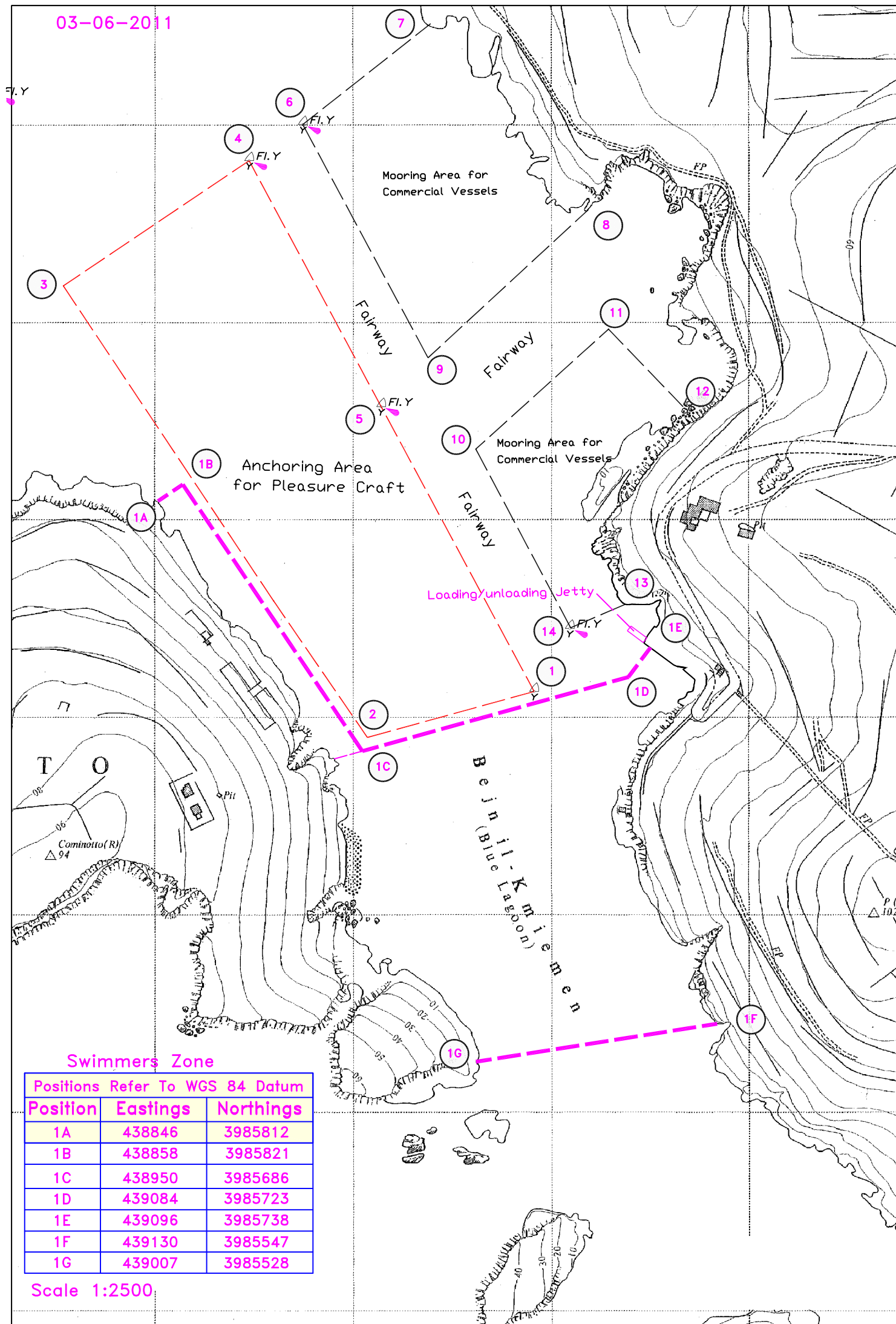
For the benefit and safety of all bathers and mariners, Transport Malta urges all visitors and commercial vessels to adhere to the new arrangements. Enforcement Officers will be constantly patrolling the area.

Mariners are advised to keep a good lookout and navigate with caution and at slow speed in the Channel between Comino and Cominotto. They are also reminded that it is prohibited to secure/moor any craft to any of the marker buoys, swimmers' zone delineation markers and related gear belonging to Transport Malta.

All positions are referred to WGS 84 DATUM.

Chart Affected: BA 211

03-06-2011



Swimmers Zone

Positions Refer To WGS 84 Datum

Position	Eastings	Northings
1A	438846	3985812
1B	438858	3985821
1C	438950	3985686
1D	439084	3985723
1E	439096	3985738
1F	439130	3985547
1G	439007	3985528

Scale 1:2500