



PORTS AND YACHTING DIRECTORATE

Transport Malta

LOCAL NOTICE TO MARINERS NO 43 of 2013

Our Ref: TM/PYD/26/95/1

3 July 2013

Malta Transport Centre
Marsa, MRS 1917
Malta

Tel: (356) 2122 2203
Fax: (356) 2125 0365
Email: info.tm@transport.gov.mt

www.transport.gov.mt

Fireworks Display from Rinella Bay and Kalkara Creek – Grand Harbour

The Ports and Yachting Directorate, Transport Malta notifies mariners that fireworks will be let off from Rinella Bay and Kalkara Creek (Points A and B as shown on attached chart) on the dates and times as follows:

In Kalkara Creek from the area known as “tax-Xewkija (point A) :

Thursday 11 July 2013	from 2000 hrs till 2300 hrs
Friday 12 July 2013	from 2030 hrs till 2300 hrs
Saturday 13 July 2013	from 2200 hrs till 2300 hrs
Sunday 14 July 2013	from 1900 hrs till 2300 hrs

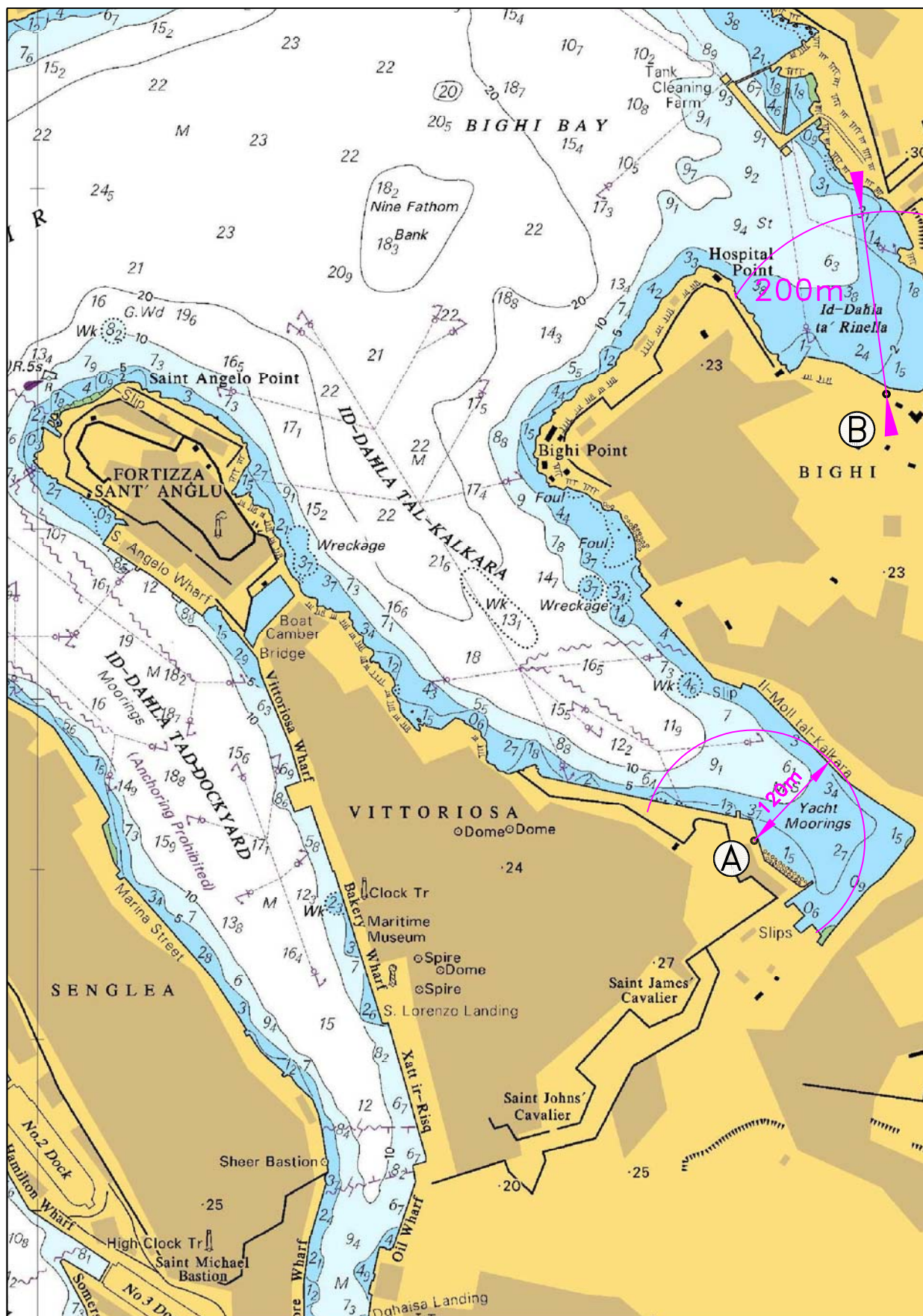
In Rinella Bay Kalkara (point B) :

Wednesday 10 July 2013	From 0745 hrs till 0815hrs, from 1145 hrs till 1215 hrs and from 1900 hrs till 2200 hrs.
Friday 12 July 2013	From 0700 hrs till the next day 13 July at 0100 hrs.

In view of the above, mariners are informed to give a wide berth of 200 meters from Rinella Bay, Kalkara. All Vessels within 120 meters radius from the area known as tax-Xewkija in Kalkara Creek (as shown on attached chart point A) are to be removed on the above-mentioned dates and times of the displays.

Mariners are to obey directives issued by the Valletta Port Control (Valletta VTS), and by Police in the area.

Chart Affected: BA 177



©British Crown Copyright 1970, 1983, 1986, 1988, 1999, 2000.
All rights reserved

The UK Hydrographic Office makes the accompanying data
available to Transport Malta under the terms and
conditions of agreement HD 1427/020930/01.

DISCLAIMER

Whilst the UK Hydrographic Office has endeavoured to ensure
that the material supplied is suitable for the purpose described,
it accepts no liability (to the maximum extent permitted by law)
for any damage or loss of any nature arising from its use.
The material supplied is used entirely at the Recipient's own risk.