



Transport Malta

PORTS AND YACHTING DIRECTORATE

LOCAL NOTICE TO MARINERS NO 63 OF 2013

Our Ref: TM/PYD/63/00

12 August 2013

Malta Transport Centre
Marsa, MRS 1917
Malta

Tel: (356) 2122 2203
Fax: (356) 2125 0365
Email: info.tm@transport.gov.mt

www.transport.gov.mt

Marine Surveys – Malta East Coast

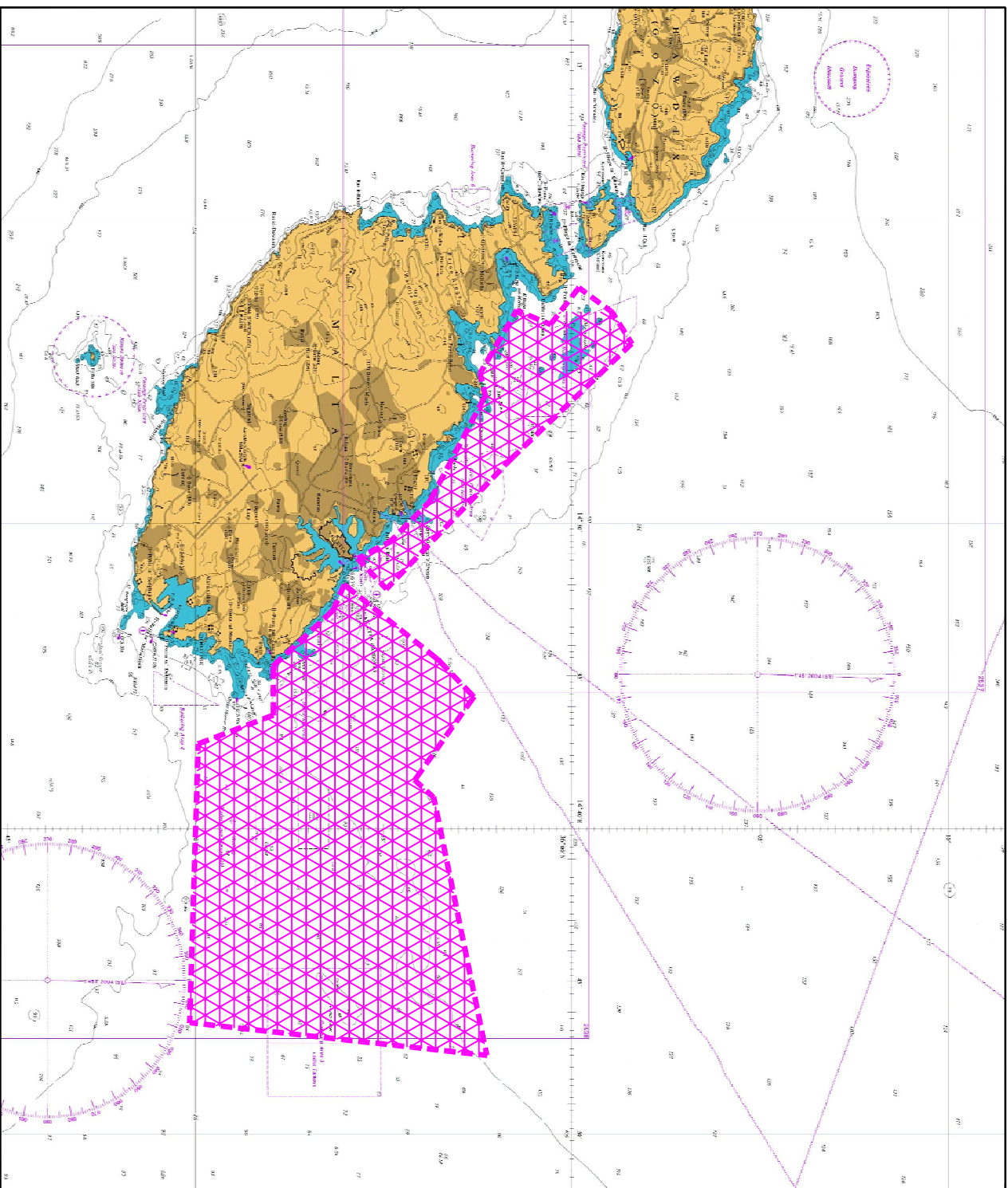
The Ports and Yachting Directorate, Transport Malta notifies Mariners that marine surveys will be carried out off the East coast of Malta within the sea area indicated on the attached chart (coloured in Magenta).

Weather permitting the surveys are expected to start on Tuesday 10th September 2013 and will be completed by Wednesday 18th September 2013.

The R/V Hurcules in conjunction with possibly a 12 m contender vessel will conduct the surveys and they will have restricted manoeuvrability.

Mariners are to note the above and give a wide berth of at least 200 m when vessels are sighted. Any instructions issued by Valletta VTS (Valletta Port Control) are to be adhered to.

Positions referred to WGS 84 DATUM



©British Crown Copyright 1970, 1983, 1986, 1988, 1999, 2000.
All rights reserved

The UK Hydrographic Office makes the accompanying data available to Transport Malta under the terms and conditions of agreement HD 1427/020930/01.

DISCLAIMER

Whilst the UK Hydrographic Office has endeavoured to ensure that the material supplied is suitable for the purpose described, it accepts no liability (to the maximum extent permitted by law) for any damage or loss of any nature arising from its use. The material supplied is used entirely at the Recipient's own risk.