



PORTS AND YACHTING DIRECTORATE

Transport Malta

## LOCAL NOTICE TO MARINERS NO 68 of 2013

Our Ref: TM/PYD/26/95/7

28 August 2013

Malta Transport Centre  
Marsa, MRS 1917  
Malta

Tel: (356) 2122 2203  
Fax: (356) 2125 0365  
Email: [info.tm@transport.gov.mt](mailto:info.tm@transport.gov.mt)

[www.transport.gov.mt](http://www.transport.gov.mt)

### Firework Displays in Grand Harbour

The Ports and Yachting Directorate, Transport Malta, notifies that firework displays will be let off from a barge moored 200m off Bighi Point on the following dates and times:-

#### Bighi shore/Barges:

Wednesday 4 September 2013	From 0800 hrs till 0810 hrs, from 1200 hrs till 1210 hrs and between 2040hrs and 2200 hrs
Friday 6 September 2013	From 0800 hrs till 0810 hrs, from 1200 hrs till 1210 hrs, from 1900 hrs till 2300 hrs
Saturday 7 September 2013	From 0800 hrs till 0900 hrs, from 1200 hrs till 1230 hrs, from 1800 hrs till 1900 hrs and from 2145 hrs till 2330 hrs
Sunday 8 September 2013	From 0800 hrs till 0810 hrs, from 1200 hrs till 1220 hrs, from 1900 hrs onwards.

#### Barge:

The barge to be used for firework displays shall be moored on Wednesday 4 September, 2013 in the following position:

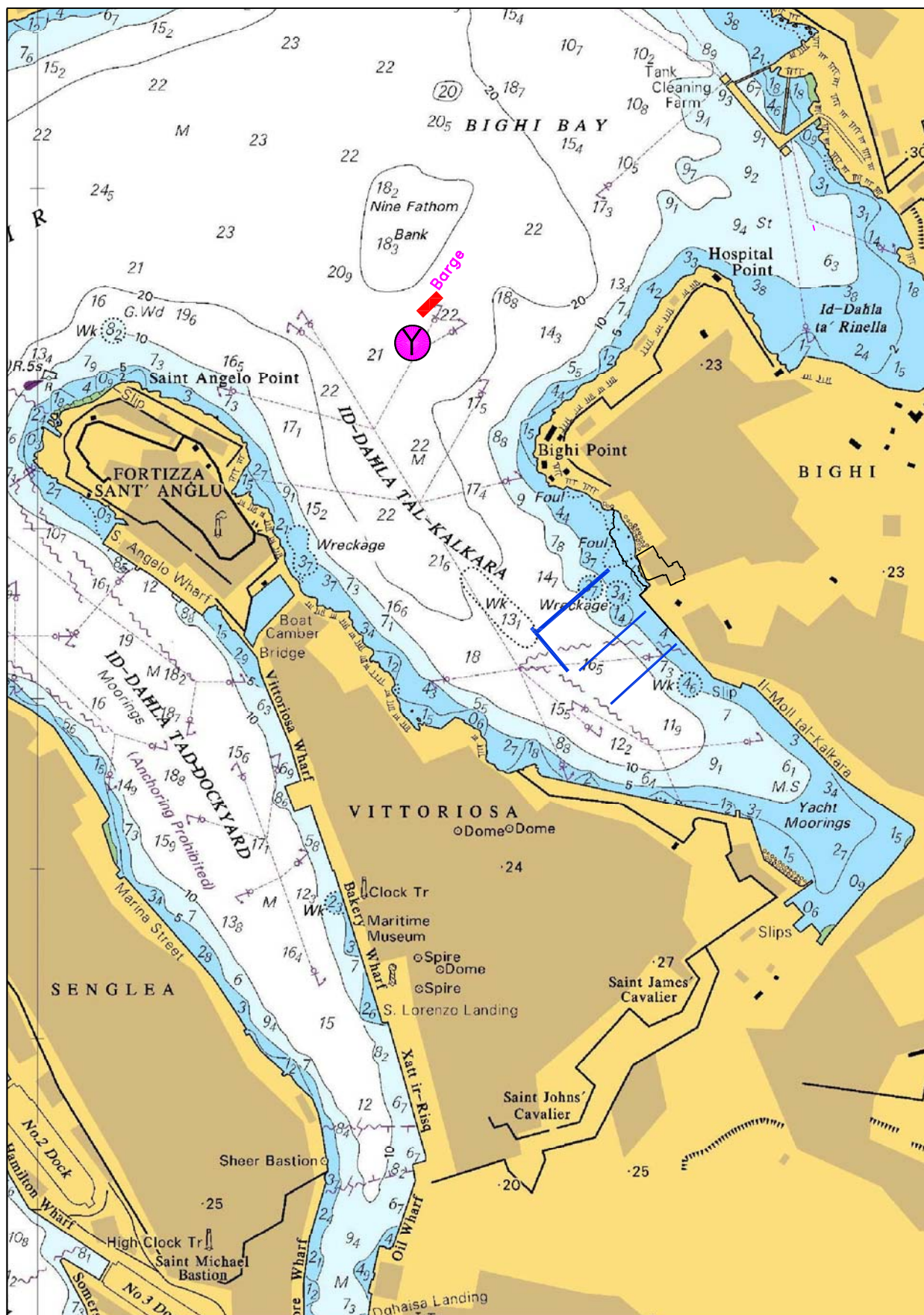
	LATITUDE (N)	LONGITUDE (E)
Y	35°53'.632	14°31'.281

The barge will be removed on Monday 9 September 2013.

A wide berth of 200 meters is requested from the position of the barge on the days and times indicated above. Mariners are to navigate with caution and slow speed. Instructions and directions given by Valletta Port Control (Valletta VTS) are to be complied with.

Chart affected BA Chart 177.

Positions are referred to WGS 84 Datum.



©British Crown Copyright 1970, 1983, 1986, 1988, 1999, 2000.  
All rights reserved

The UK Hydrographic Office makes the accompanying data  
available to Transport Malta under the terms and  
conditions of agreement HD 1427/020930/01.

#### DISCLAIMER

Whilst the UK Hydrographic Office has endeavoured to ensure  
that the material supplied is suitable for the purpose described,  
it accepts no liability (to the maximum extent permitted by law)  
for any damage or loss of any nature arising from its use.  
The material supplied is used entirely at the Recipient's own risk.