



**Transport Malta**

Malta Transport Centre  
Marsa, MRS 1917  
Malta

Tel: (356) 2122 2203  
Fax: (356) 2125 0365  
Email: [info.tm@transport.gov.mt](mailto:info.tm@transport.gov.mt)

[www.transport.gov.mt](http://www.transport.gov.mt)

**PORTS AND YACHTING DIRECTORATE**

## **LOCAL NOTICE TO MARINERS NO 78 OF 2014**

Our Ref: TM/PYD/42/08

24 October 2014

### **Further to St. Thomas Bay Powerboat Races**

The Ports and Yachting Directorate, Transport Malta notifies mariners that further to Notice to Mariners No 75 of 2014 regarding power boat races off St. Thomas Bay that due to inclement weather these will now be held on 15 and 16 November 2014, weather permitting.

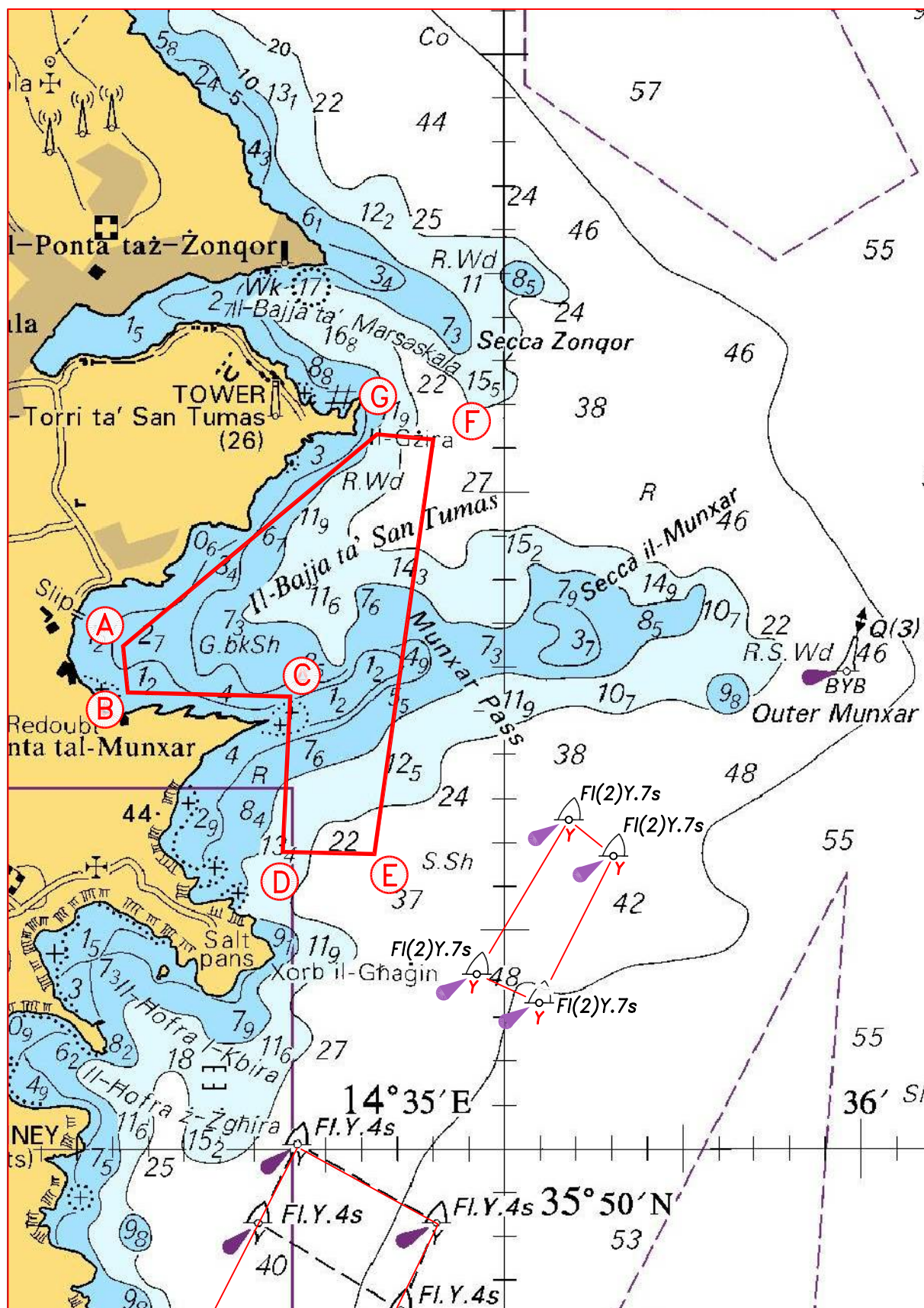
Buoys will be laid in the following positions A, B, C, D, E, F and G as indicated on chart attached:

<b>POSITION</b>	<b>LATITUDE (N)</b>	<b>LONGITUDE (E)</b>
A	35° 51'.164	14° 33'.936
B	35° 51'.047	14° 33'.952
C	35° 51'.060	14° 34'.481
D	35° 50'.739	14° 34'.512
E	35° 50'.738	14° 34'.794
F	35° 51'.663	14° 34'.890
G	35° 51'.667	14° 34'.725

The timings of the races will be between 0800 hours and 1800 hours local time.

Mariners are instructed not to cross the course on the mentioned dates and times stated above and that they are to give the indicated course a wide berth. Navigation within St Thomas Bay will be restricted during the race. Mariners are to follow instructions given by Valletta Port Control (Valletta VTS) and support safety craft in the area.

Charts Affected: BA 194, and 2538



©British Crown Copyright 1970, 1983, 1986, 1988, 1999, 2000.  
All rights reserved

The UK Hydrographic Office makes the accompanying data available to Transport Malta under the terms and conditions of agreement HD 1427/020930/01.

#### DISCLAIMER

Whilst the UK Hydrographic Office has endeavoured to ensure that the material supplied is suitable for the purpose described, it accepts no liability (to the maximum extent permitted by law) for any damage or loss of any nature arising from its use. The material supplied is used entirely at the Recipient's own risk.