



PORTS AND YACHTING DIRECTORATE

## LOCAL NOTICE TO MARINERS NO 91 of 2017

Our Ref: TM/PYD/131/92

11 August 2017



Transport Malta

Malta Transport Centre  
Marsa, MRS 1917  
Malta

Tel: (356) 2122 2203  
Fax: (356) 2125 0365  
Email: [info.tm@transport.gov.mt](mailto:info.tm@transport.gov.mt)

[www.transport.gov.mt](http://www.transport.gov.mt)

### Malta Air Show - 2017 Maritime Exclusion Zones between 21<sup>st</sup> and 24<sup>th</sup> September 2017

The Ports and Yachting Directorate, Transport Malta notifies all mariners that the Malta Air Show - 2017 will be held between Saturday 23<sup>rd</sup> September 2017 and Sunday 24<sup>th</sup> September 2017.

The Ports and Yachting Directorate, Transport Malta notifies that a Maritime Exclusion Zone (MEZ) will be established between Thursday 21<sup>st</sup> September 2017 and Sunday 24<sup>th</sup> September 2017.

The MEZ is delineated by the imaginary lines between the points **A, B, C, D, E, F, G, H** and **I** and the coastline, shown hatched in red on attached chart 1. Flashing markers, with red flags, will be placed in positions **B, C, D, E, F, G** and **H**.

Point	Latitude (N)	Longitude (E)	
A	35° 53'.854	014° 31'.796	Coast
B	35° 54'.045	014° 31'.967	Flashing Markers
C	35° 54'.231	014° 32'.136	Flashing Markers
D	35° 54'.011	014° 32'.491	Flashing Markers
E	35° 53'.784	014° 32'.861	Flashing Markers
F	35° 53'.554	014° 33'.236	Flashing Markers
G	35° 53'.320	014° 33'.617	Flashing Markers
H	35° 53'.176	014° 33'.479	Flashing Markers
I	35° 53'.032	014° 33'.339	Coast

The MEZ will be in force as follows:

Thursday 21 <sup>st</sup> September 2017:	from 1600 hours to 1830 hours local time.
Friday 22 <sup>nd</sup> September 2017:	from 1500 hours to 1830 hours local time.
Saturday 23 <sup>rd</sup> September 2017:	from 1500 hours to 1830 hours local time.
Sunday 24 <sup>th</sup> September 2017:	from 1500 hours to 1830 hours local time.

Mariners are informed that during the above display dates, entry and exit from the Grand Harbour will be restricted to navigation from 1500 hours to 1830 hours local time.

The section of Barriera Wharf behind the Fish Market, shown hatched in red on attached chart 2, is to be kept clear during the above mentioned days and time.

Mariners are instructed to comply with any instructions given by Valletta Port Control (Valletta VTS) on VHF channel 12 and maritime enforcement vessels operating in the areas.

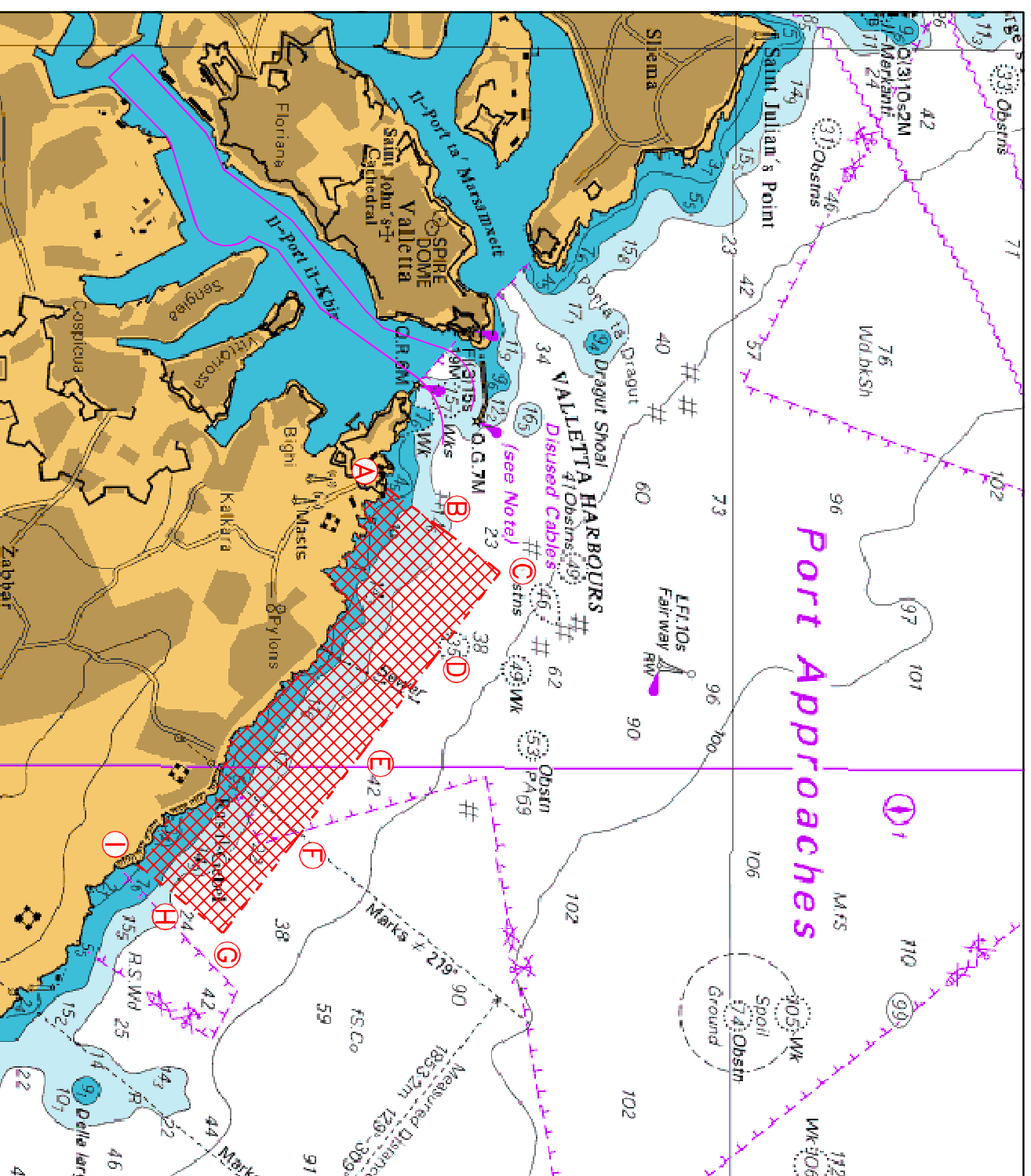
Charts affected: BA 177, 2538

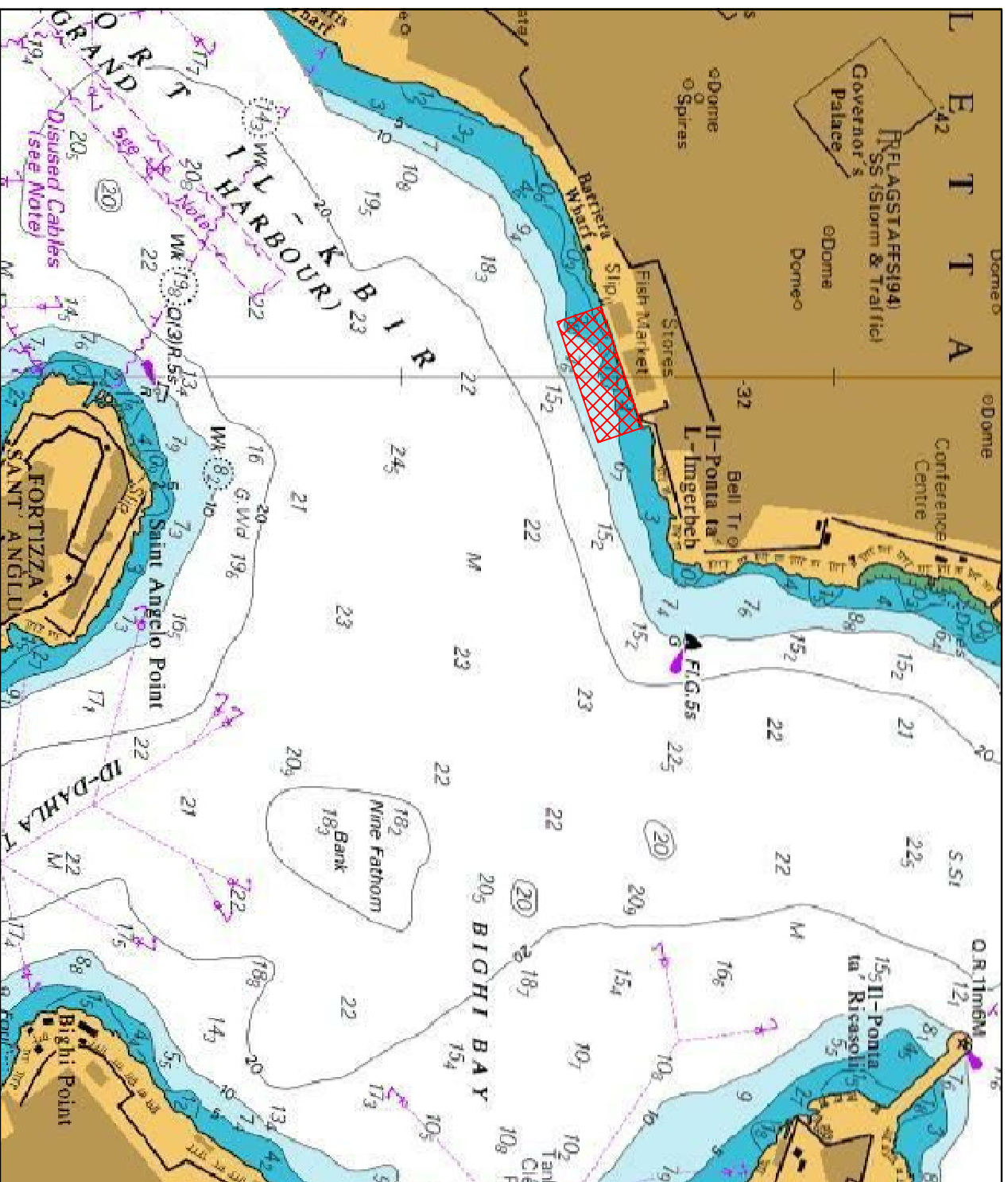
All positions are referred to WGS 84 DATUM.

©British Crown Copyright 1970, 1983, 1986, 1988, 1999, 2000.  
All rights reserved  
The UK Hydrographic Office makes the accompanying data available to Transport Malta under the terms and conditions of agreement HD 1427/020930/01.

#### DISCLAIMER

Whilst the UK Hydrographic Office has endeavoured to ensure that the material supplied is suitable for the purpose described, it accepts no liability for the maximum extent permitted by law, for any damage or loss of any nature arising from its use. The material supplied is used entirely at the Recipient's own risk.





©British Crown Copyright 1970, 1983, 1986, 1988, 1999, 2000.  
All rights reserved

The UK Hydrographic Office makes the accompanying data available to Transport Malta under the terms and conditions of agreement HD 1427/020930/01.

#### DISCLAIMER

Whilst the UK Hydrographic Office has endeavoured to ensure that the material supplied is suitable for the purpose described, it accepts no liability (to the maximum extent permitted by law) for any damage or loss of any nature arising from its use. The material supplied is used entirely at the Recipient's own risk.